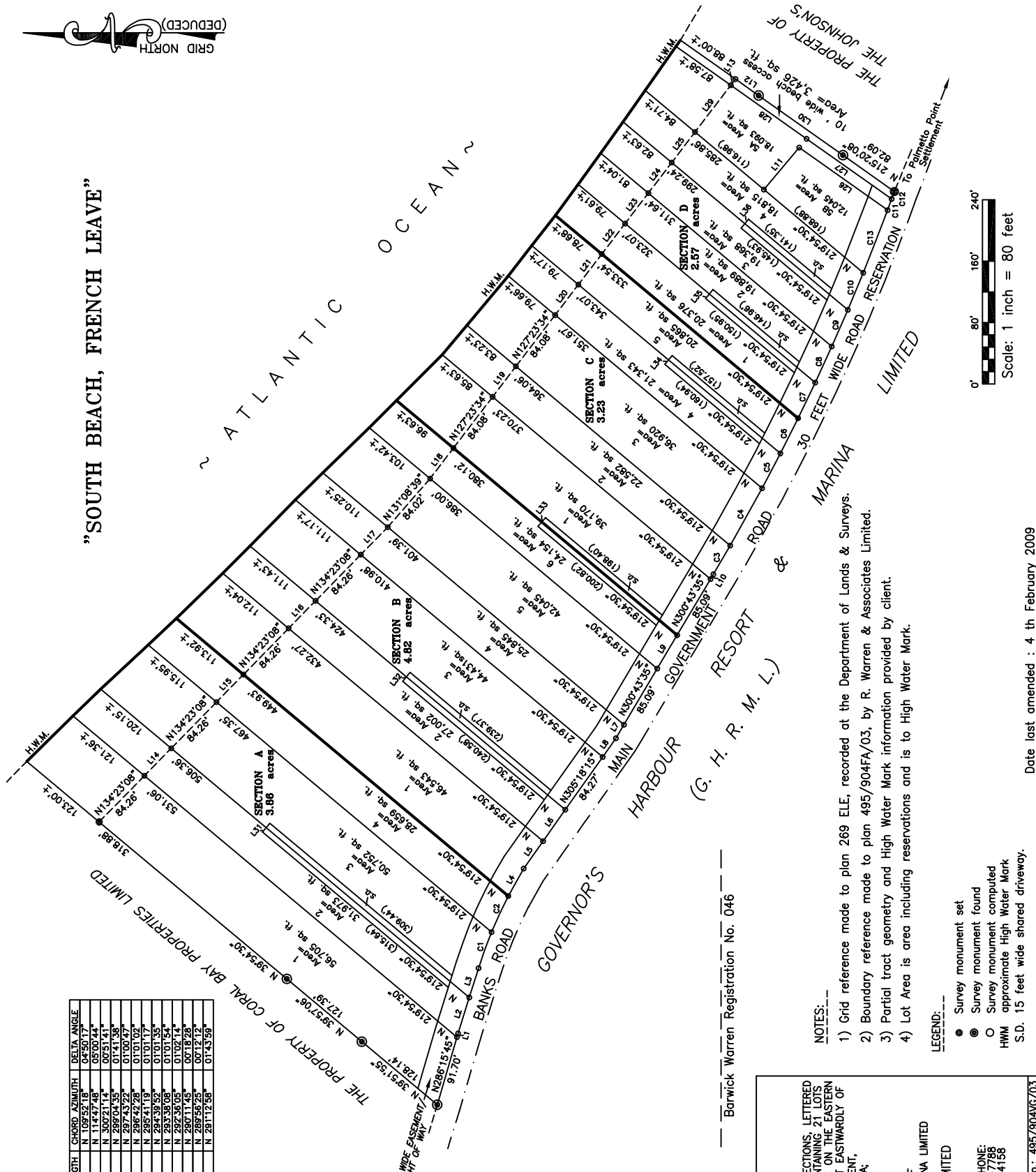




"SOUTH BEACH, FRENCH LEAVE"

ATLANTIC OCEAN



CURVE	RADIUS	ARC LENGTH	CHORD LENGTH	CHORD AZIMUTH	DELTA ANGLE
C1	592.22'	50.01'	N 109°52'18"	04°50'17"	
C2	51.76'	51.61'	N 14°47'46"	03°30'44"	
C3	2883.14'	65.83'	N 290°04'55"	01°51'39"	
C4	2883.14'	51.15'	N 297°43'22"	01°30'47"	
C5	2883.14'	51.36'	N 296°42'28"	01°01'02"	
C6	2883.14'	51.58'	N 295°41'18"	01°01'17"	
C7	2883.14'	51.82'	N 294°39'52"	01°01'35"	
C8	2883.14'	52.09'	N 293°38'08"	01°01'54"	
C9	2883.14'	52.37'	N 292°36'05"	01°02'14"	
C10	2883.14'	15.53'	N 280°11'45"	00°18'28"	
C11	2883.14'	10.27'	N 289°56'25"	00°12'12"	
C12	2883.14'	87.51'	N 291°12'58"	01°43'59"	

LINE	AZIMUTH	DISTANCE
L1	N 286°15'45"	5.22'
L2	N 297°27'09"	48.93'
L3	N 297°27'09"	40.07'
L4	N 305°18'15"	43.75'
L5	N 305°18'15"	50.18'
L6	N 300°43'35"	20.81'
L7	N 300°43'35"	29.75'
L8	N 300°43'35"	50.65'
L9	N 300°43'35"	7.21'
L10	N 130°01'44"	71.47'
L11	N 127°23'54"	36.89'
L12	N 127°23'54"	10.01'
L13	N 127°23'54"	50.15'
L14	N 127°23'54"	50.15'
L15	N 127°23'54"	50.15'
L16	N 127°23'54"	50.15'
L17	N 127°23'54"	50.15'
L18	N 127°23'54"	50.15'
L19	N 127°23'54"	50.15'
L20	N 127°23'54"	50.15'
L21	N 127°23'54"	50.15'
L22	N 127°23'54"	50.15'
L23	N 127°23'54"	50.15'
L24	N 127°23'54"	50.15'
L25	N 127°23'54"	50.15'
L26	N 127°23'54"	50.15'
L27	N 127°23'54"	50.15'
L28	N 127°23'54"	50.15'
L29	N 127°23'54"	50.15'
L30	N 127°23'54"	50.15'
L31	N 127°23'54"	50.15'
L32	N 127°23'54"	50.15'
L33	N 127°23'54"	50.15'
L34	N 127°23'54"	50.15'
L35	N 127°23'54"	50.15'
L36	N 127°23'54"	50.15'

PLAN SHOWING

A TRACT OF LAND PARTITIONED INTO FOUR SECTIONS, LETTERED A THROUGH D RESPECTIVELY, TOGETHER CONTAINING 21 LOTS AND A 10 FEET WIDE BEACH ACCESS SITUATE ON THE EASTERN SIDE OF BANKS ROAD AND ABOUT 3,300 FEET EASTWARDLY OF GOVERNOR'S HARBOUR SETTLEMENT, ON THE ISLAND OF ELEUTHERA, COMMONWEALTH OF THE

— BAHAMAS —

PREPARED AT THE INSTANCE OF
GOVERNOR'S HARBOUR RESORT & MARINA LIMITED

BY
R. WARREN & ASSOCIATES LIMITED

LAND SURVEYORS

ADDRESS:
P.O. Box N-1081,
NASSAU, THE BAHAMAS

TELEPHONE:
328-7788
323-4158

Email: rlw@rwa.com

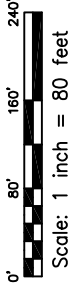
NOTES:

- 1) Grid reference made to plan 289 ELE, recorded at the Department of Lands & Surveys.
- 2) Boundary reference made to plan 495/904FA/03, by R. Warren & Associates Limited.
- 3) Partial tract geometry and High Water Mark information provided by client.
- 4) Lot Area is area including reservations and is to High Water Mark.

LEGEND:

- Survey monument set
- Survey monument found
- Survey monument computed
- HWM approximate High Water Mark
- S.D. 15 feet wide shared driveway.

Barwick Warren Registration No. 046



Date last amended : 4 th February 2009

Date: February 2009 | Ref.: 904/03 | Plan No.: 495/904VG/03